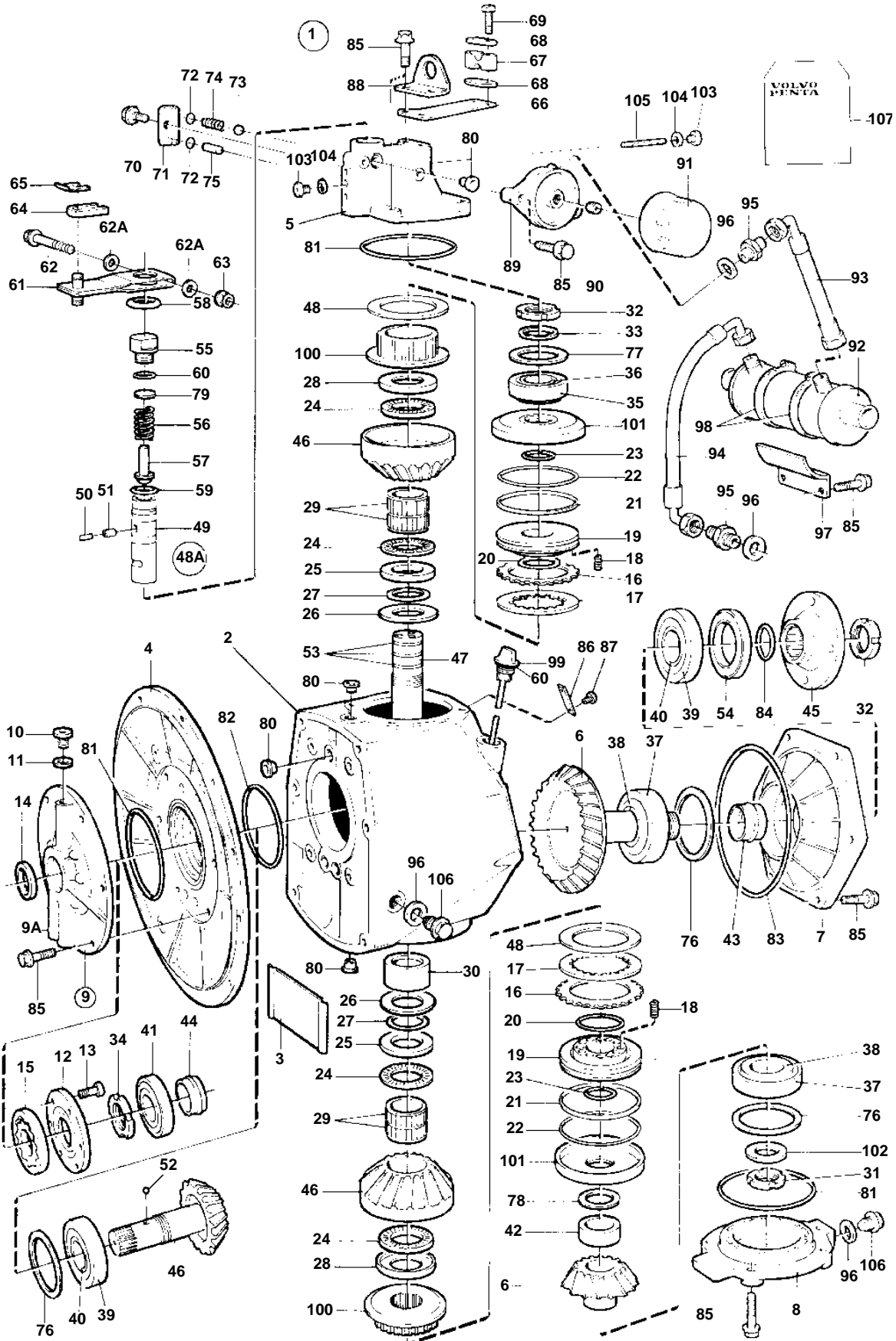


HS1A



15156

HS1A

REF	PART NO.	QTY	DESCRIPTION		NOTES
1	873172	1	Reversing gear		RATIO 2.62:1
2	872500	1	• Gear housing	SO	
3	872574	1	• Shield		
4	872501	1	• Cover		
5	872725	1	• Valve housing		
6	872534	1	• Drive gear set		
7	872505	1	• Bearing housing		
8	872506	1	• Bearing housing		
9	3851512	1	• Oil pump		
9A		1	• • Oil pump housing		
10	945065	3	• • Plug		
11	969011	3	• • Gasket		
12		1	• • Cover		
13	942001	6	• • Screw		
14	6842273	1	• • Sealing ring		Included in gasket kit.
15		1	• • Pump element		
16		14	• Disc		Included in disc kit.
17		16	• Disc		Included in disc kit.
18	872580	26	• Spring		
19	872518	2	• Piston		
20	977891	2	• O-ring		Included in gasket kit.. Included in piston kit.
21		2	• Piston ring		Included in piston kit.
22		2	• O-ring		Included in piston kit.
23	872522	2	• Lock ring		
24	184175	4	• Needle bearing		
25	184239	2	• Washer		
26	872581	2	• Spring washer		
27	956000	2	• O-ring		Included in gasket kit.
28	872570	2	• Thrust washer		
29	184798	4	• Needle bearing		
30	872587	1	• Roller bearing		
31	969072	1	• Round nut		Included in gasket kit.
32	969073	2	• Round nut		Included in gasket kit.
33	872520	1	• Washer		
34	969074	1	• Round nut		Included in gasket kit.
35	181304	1	• Cup		
36	181303	1	• Roller bearing		
37	183403	2	• Cup		
38	183649	2	• Roller bearing		
39	181036	2	• Cup		
40	184797	2	• Roller bearing		
41	183232	1	• Roller bearing		
42	872521	1	• Spacer sleeve		
43	872568	1	• Pretensioning sleeve		
44	872569	1	• Pretensioning sleeve		
45	872523	1	• Companion flange		
46	872507	1	• Drive gear set		
47	872515	1	• Shaft		
48		2	• Washer		Included in disc kit.
48A	872889	1	• Valve		
49		1	• • Valve		
50		1	• • Sleeve		
51		1	• • Magnet		
52	192601	1	• Ball		
53		3	• Piston ring		Included in piston kit.
54	872701	1	• Sealing ring		Included in gasket kit.
55	872525	1	• Housing		
56	872585	1	• Spring		
57	873519	1	• Valve kit		
58	872567	1	• Cover		
59	977890	1	• O-ring		Included in gasket kit.

HS1A

REF	PART NO.	QTY	DESCRIPTION	NOTES
60	925058	2	• O-ring	Included in gasket kit.
61	872526	1	• Lever	
62	955252	1	• Screw	
62A	940090	2	• Washer	
63	963104	1	• Nut	
64	872075	1	• Anchorage	
65		1	• Retaining ring	
66	872528	1	• Bracket	
67	872074	1	• Retainer	
68	872076	2	• Washer	
69	956083	2	• Screw	
70	965175	1	• Screw	
71	872529	1	• Cover	
72	955983	2	• O-ring	Included in gasket kit.
73	183801	1	• Ball	
74	872586	1	• Spring	
75	184796	1	• Needle bearing	
76	977913	X	• Shim	TH = 0,10mm
	977914	X	• Shim	TH = 0.15mm
	977915	X	• Shim	TH=0.35mm
77	977910	X	• Shim	TH = 0,10mm
	977911	X	• Shim	TH = 0.15mm
	977912	X	• Shim	TH=0.35mm
78	978912	X	• Shim	TH = 0,30mm
		X	• Shim	TH=0.35mm
	978913	X	• Shim	TH=0,40mm
	978914	X	• Shim	TH = 0,45mm
	978915	X	• Shim	TH = 0,50mm
	978916	X	• Shim	TH = 0,55mm
79	978917	X	• Shim	TH = 0,50mm
80	422413	11	• Sealing ring	Included in gasket kit.
81	925263	3	• O-ring	Included in gasket kit.
82	925260	1	• O-ring	Included in gasket kit.
83	948866	1	• O-ring	Included in gasket kit.
84	925065	1	• O-ring	Included in gasket kit.
85	947760	28	• Flange screw	
86		1	• Sign	
87	950885	2	• Rivet	
88		1	• Lifting eye	
89	872605	1	• Bracket	
90	840274	1	• Nipple	
91	834337	1	• Oil filter	
92	872626	1	• Oil cooler	
93	872637	1	• Hydraulic hose	
94	872638	1	• Hydraulic hose	
95	192639	2	• Nipple	
96	947624	4	• Gasket	Included in gasket kit.
97	872615	1	• Bracket	
98	961674	2	• Clamp	
99	3858156	1	• Dipstick	(872538)
100	872608	2	• Hub	
101	872611	2	• Cylinder	
102	978906	1	• Support washer	
103	977917	3	• Plug	
104	947620	3	• Gasket	Included in gasket kit.
105	872577	1	• Oil pump screen	
106	1381498	2	• Plug	
107	876588	1	Gasket kit	SEE GROUP 99
	876591	1	Disc kit	SEE GROUP 99
	876589	1	Piston ring kit	SEE GROUP 99